



Company Overview 2009

AGM, 27 November 2009

Disclaimer

This presentation ("Presentation") has been prepared by East Energy Resources Limited ("EER") based on information available to it from its own and third party sources and is not a disclosure document nor any other form of offer to invest in EER securities.

This Presentation does not purport to contain all the information that a prospective investor may require in connection with any potential investment in EER. Each Recipient must make its own independent assessment of EER before acquiring any securities in EER. You should not treat the contents of this Presentation, or any information provided in connection with it, as financial advice, financial product advice or advice relating to legal, taxation or investment matters. Before acquiring any EER securities, you should consult your own professional advisers and conduct your own investigation and analysis in relation to EER.

This Presentation contains reference to certain intentions, expectations, future plans, strategy and prospects of EER ("Forward Looking Statements"), including with respect to feasibility and development timetables, mineral grades and metallurgical recoveries, potential production rates and operating and capital costs for conceptual development plans and potential investment returns. Those Forward Looking Statements are based on certain assumptions which may or may not be achieved or on which views may differ and which may be affected by many known and unknown risks and factors outside the control of EER. As such, EER's actual future results, performance or achievements may be materially different from those expected, planned or intended.

No representation or warranty is made and no liability accepted by EER or any of its advisers, agents or employees as to the accuracy, completeness, currency or reasonableness of the information in this Presentation or provided in connection with it, including the accuracy or attainability of any estimates, forecasts or projections set out in this Presentation.

EER does not accept any responsibility to inform you of any matter arising or coming to EER's notice after the date of this Presentation which may affect any matter referred to in this Presentation.

Any liability of EER, its advisers, agents and employees to you or to any other person or entity arising out of this Presentation including pursuant to common law, the Corporations Act 2001 and the Trade Practices Act 1974 or any other applicable law is, to the maximum extent permitted by law, expressly disclaimed and excluded.

The distribution of this Presentation may be restricted by law in certain jurisdictions. Recipients, and any other persons who come into possession of this Presentation must inform themselves about, and observe any such restrictions

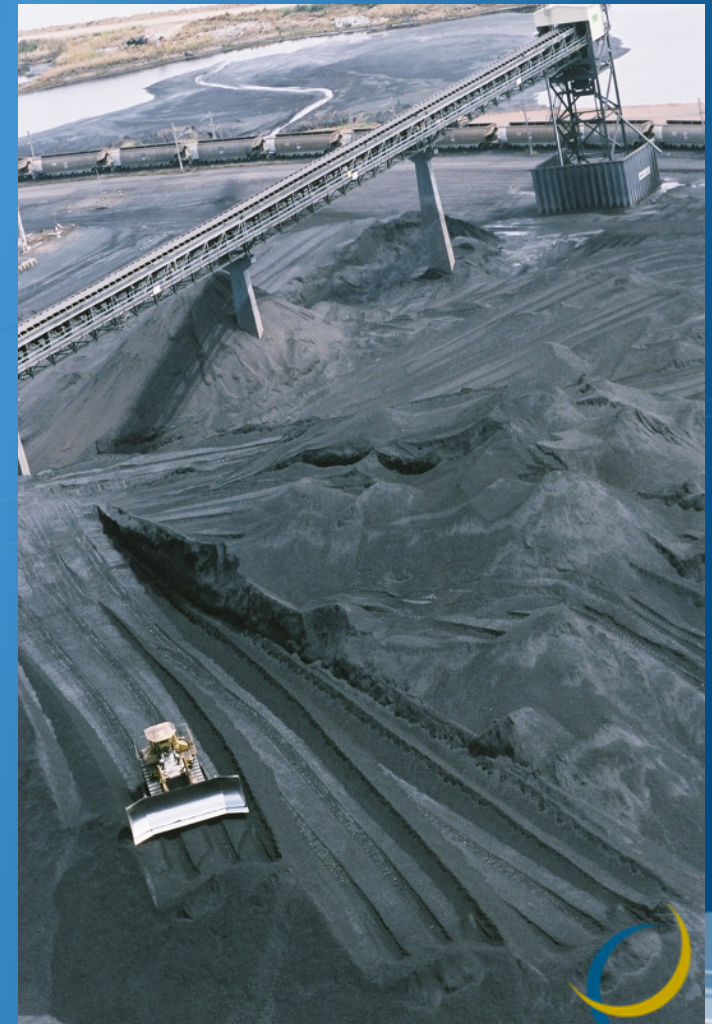
The information in this Presentation that relates to Exploration Results, Mineral Resources and Ore Reserves is based on information compiled by Peter Tighe, who is a member of Australasian Institute of Mining and Metallurgy and is a Competent Person as defined in the 2004 JORC Code and consents to the publication of this information in the form and context in which it appears.

East Energy Goal

The Primary goal of the Company is to generate shareholder value through coal exploration success and future development opportunities.

Corporate Overview

ASX Listing (EER)	19 December 2007
Shares on Issue	128,602,349
Current Share Price (at 29/10/09)	A\$0.12
Market Capitalisation	A\$15.43m
Cash position (29/10/09)	Approximately \$3.9m
Debt	Nil
Unlisted Options on Issue	77,304,694 ¹
Top 20 Shareholding	>83.06%



¹ 1,100,000 unlisted options expire 31 August 2009
76,204,694 unlisted options expire 31 March 2011

Board and Management

Mark Basso - Managing Director

Has a Bachelor of Engineering, and was involved in the electrical design and construction phases of the Perth International Airport, LNG Storage Tanks on the Burrup and HV Substations Cape Lambert and Pannawonica. Mark has extensive business management experience in administration, construction and development. Mark is responsible for the day to day management of East Energy.

Mr Clive Triplett - Executive Director

Managing Director of RMA Energy (ASX: RMT) and has headed private companies in the areas of consulting, International trade, finance and infrastructure development. Extensive network of high-level contacts in both government and the private sector and has negotiated and secured international trade and mining agreements.

Malcolm Castle - Non-Executive Director

More than 40 years experience in exploration geology and property evaluation. Extensive experience in a number of commodities including gold, base metals, iron ore, mineral sands and coal. He has a number of related qualifications including B.Sc (Hons), GCert APP Fin (Sec Inst), MAusIMM

Ranko Matic - Non-Executive Director and Company Secretary

Chartered Accountant with more than 18 years experience in financial and executive management, accounting, audit, business and corporate advisory. Currently holds company secretarial roles with publicly listed companies Golden State Resources Ltd, White Canyon Uranium Ltd and Accent Resources NL.

Peter Tighe – Senior Geologist

Peter Brings a wealth of experience and knowledge in coal and mineral sands geology, exploration and mine planning. Peter holds a Bachelor of Science in Geology and has been a member of the Australasian Institute of Mining and Metallurgy since 1989.

Doug Mitchell – Site Supervisor

Doug has extensive experience in exploration work, transportation, logistics and management. Dough is responsible for coordinating all of the on-site exploration activities for East Energy.

Aldo Van Heeswijck - Geologist

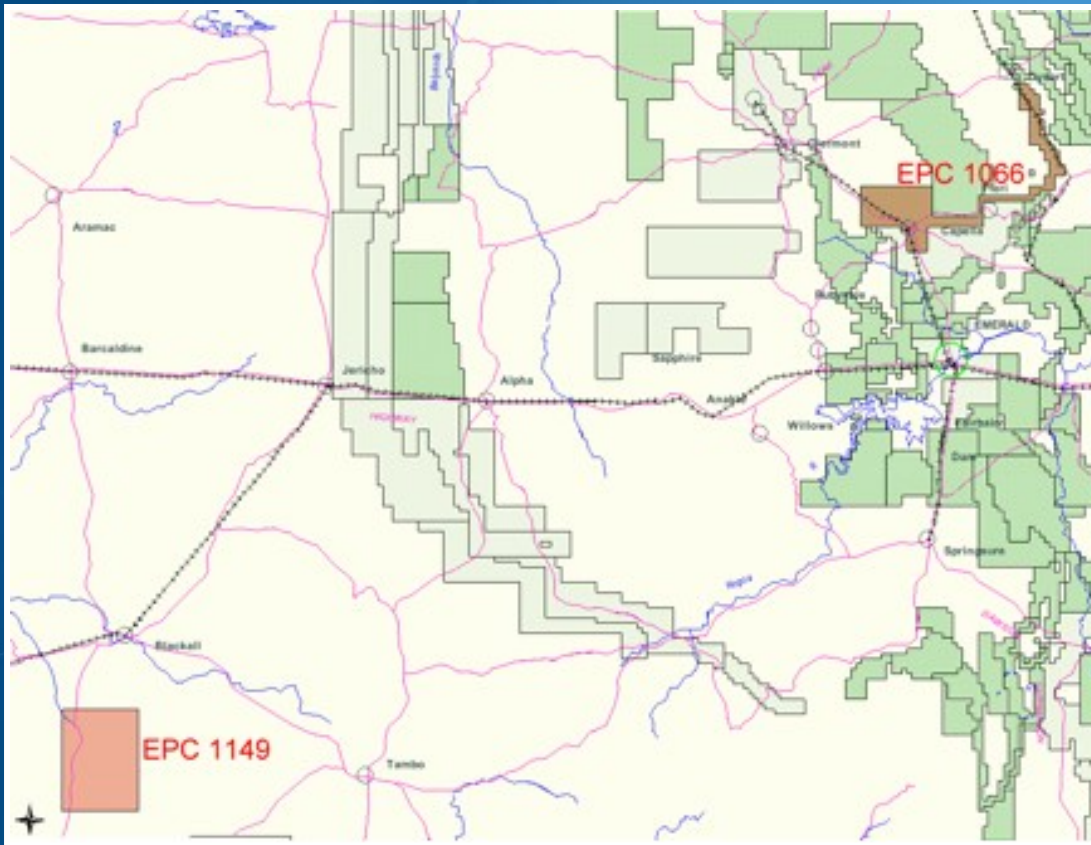
Dr Aldo van Heeswijck brings extensive experience from varied roles within the coal industry over the last 37 years. His academic qualifications include a PhD in Earth Sciences, Master of Scientific Studies and postgraduate qualifications in systems analysis, systems design and microcomputers.

Andrea Betti – Chief Financial Officer

Andrea has extensive experience in banking and finance and holds a Bachelor of Commerce and Graduate Diploma in Applied Finance and Investment. She has recently completed her MBA at UWA.

East Energy Resources Limited

Currently hold 2 Coal Exploration Permits in known coal areas of Central Queensland – Blackall and Capella (refer map below)



Blackall (EPC 1149)

Located in the Adavale Basin, 65km south of Blackall township and comprising 300 sub blocks (approx. 867 km²)

Capella (EPC 1066)

Located in the Bowen Basin, predominantly surrounding the Capella Township and comprising 179 subblocks (approx 517 km²)

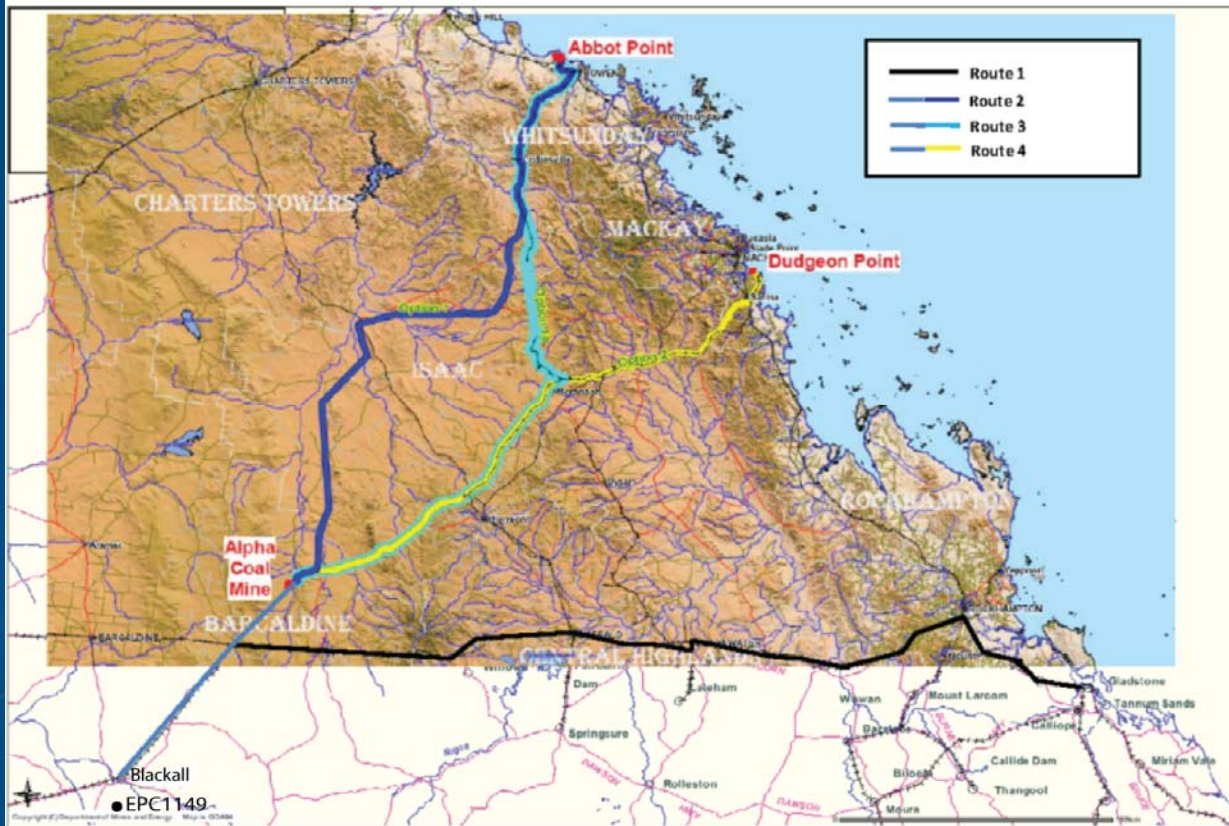
Highlights in 2008/2009

- Successful completion of First Drilling Program at Blackall tenement (EPC 1149)
- JORC Compliant Resource Report for Blackall (EPC 1149) completed by SRK consulting providing estimate of an Inferred Thermal Coal Resource of 1.2 billion tonnes
- Successful Rights Issue raises \$3.8m to fund further drilling programs
- Completion of Drilling Program at Capella tenement (EPC 1066)
- Recommencement of Drilling Program at Blackall Tenement (EPC 1149) to explore northern half of tenement and to assist upgrade of JORC *Inferred* Resource to JORC *Indicated* resource.
- Lots of interest shown for our
- Blackall Tenement development



Queensland Coal Market (cont)

Proposed Rail Routes for Alpha Coal Project
(Map not to scale)



Hancock Mining announced in August 2009 it would be looking to construct a 510km railway line to a privately built port located at Abbot Point from its thermal coal operation in central Queensland's Galilee Basin. East Energy's Blackall Project is located 260km from the Hancock owned Alpha Coal Project.

Company Focus

Blackall Coal Tenement – EPC 1149

- Always been our prime asset
- Very Successful first Drilling Program
- Achieved JORC *inferred* resource
- Report from Coffey completed and presented to the Board
- Report from SRK Consulting advising secondary drilling program
- Commenced Second Drilling Program to:
 - Drill previously unexplored northern portion of tenement with aim of increasing volume of coal contained within tenement
 - Drill program as advised by SRK consulting to upgrade to JORC *indicated* resource
- Initial results from Secondary Drilling Program to date have been very encouraging with coal seams intersected



Company Focus

Capella Tenement – EPC 1066

- Desktop Study completed in December 2008
- 50% of sub blocks relinquished in Quarter 1 2009 based on above study and in accordance with relinquishment program provided by Queensland DME
- An exploration drilling program subsequently recommended for remaining subblocks
- Drilling program of 16 RAB holes was undertaken in September 2009
- No coal seams intersected to depths of approx. 150m
- As a result, the decision was made not to undertake any further drilling and to relinquish entire remaining tenement.
- Efforts have therefore been refocused on Blackall tenement (EPC 1149) which has always been the prime Company asset.

Resource Data

Seam Group	Cumulative av. Ply Thickness (m)	Raw Tonnes Inferred (Mt)	F1.60 av. Yield %	Washed (F1.60) Tonnes Inferred (Mt)
1	1.69	163.8	76.39	125.1
2	1.09	259.3	84.98	220.4
3	2.47	402.5	84.95	341.9
4	1.7	396.6	81.43	322.9
Total	6.95	1222	82.6	1010

Coal Quality Data

Seam Group	RD Raw	Yield F1.60	Ash F1.60	Moisture F1.60	VM F1.60	FC F1.60	CV F1.60	TS F.160
	ad g/cc	%	ad %	ad %	ad %	ad %	ad MJ/kg	ad %
1	1.58	76.39	13.37	14.19	30.74	41.73	20.29	0.33
2	1.54	84.98	12.62	14.57	31.38	41.42	20.44	0.31
3	1.53	84.95	11.94	14.25	31.48	42.36	20.82	0.39
4	1.55	81.43	12.11	13.84	31.01	42.96	20.9	0.39

Why invest in East Energy?

- We make things happen and focus on what matters
- We have a highly committed and focused team, who are committed to developing assets in the most effective and efficient Manner
- Achievement of JORC indicated resource from initial 2008 drilling program at Blackall
- Initial results from Second Drilling program at Blackall appear to look promising
- Private Rail/Port Plans for Central Queensland providing required infrastructure
- Major Coal companies in the same location are at a slightly more advanced stage than East Energy which is generating interest in Central Queensland Investments



For more information or if you have any queries you can contact East Energy at:

Office Address

Level 7, 16 St Georges Tce, Perth

Telephone

+61 8 9225 5833

0412 844 422

Facsimile

+61 8 9225 7311

Email

info@eastenergy.com.au

Website

www.eastenergy.com.au

