



Developing two highly prospective QLD coal projects

Company Overview

28 November 2008



Disclaimer

This presentation ("Presentation") has been prepared by East Energy Resources Ltd ("EER") based on information available to it from its own and third party sources and is not a disclosure document nor any other form of offer to invest in EER securities.

This Presentation does not purport to contain all the information that a prospective investor may require in connection with any potential investment in EER. Each Recipient must make its own independent assessment of EER before acquiring any securities in EER. You should not treat the contents of this Presentation, or any information provided in connection with it, as financial advice, financial product advice or advice relating to legal, taxation or investment matters. Before acquiring any EER securities, you should consult your own professional advisers and conduct your own investigation and analysis in relation to EER.

This Presentation contains reference to certain intentions, expectations, future plans, strategy and prospects of EER ("Forward Looking Statements"), including with respect to feasibility and development timetables, mineral grades and metallurgical recoveries, potential production rates and operating and capital costs for conceptual development plans and potential investment returns. Those Forward Looking Statements are based on certain assumptions which may or may not be achieved or on which views may differ and which may be affected by many known and unknown risks and factors outside the control of EER. As such, EER's actual future results, performance or achievements may be materially different from those expected, planned or intended.

No representation or warranty is made and no liability accepted by EER or any of its advisers, agents or employees as to the accuracy, completeness, currency or reasonableness of the information in this Presentation or provided in connection with it, including the accuracy or attainability of any estimates, forecasts or projections set out in this Presentation.

EER does not accept any responsibility to inform you of any matter arising or coming to EER's notice after the date of this Presentation which may affect any matter referred to in this Presentation.

Any liability of EER, its advisers, agents and employees to you or to any other person or entity arising out of this Presentation including pursuant to common law, the Corporations Act 2001 and the Trade Practices Act 1974 or any other applicable law is, to the maximum extent permitted by law, expressly disclaimed and excluded.

The distribution of this Presentation may be restricted by law in certain jurisdictions. Recipients, and any other persons who come into possession of this Presentation must inform themselves about, and observe any such restrictions

The information in this Presentation that relates to Exploration Results, Mineral Resources and Ore Reserves is based on information compiled by Peter Tighe, who is a member of Australasian Institute of Mining and Metallurgy and is a Competent Person as defined in the 2004 JORC Code and consents to the publication of this information in the form and context in which it appears.



East Energy Goal

*The Primary **goal** of the company is to **generate** shareholder **value** through coal exploration **success** and future development **opportunities***

Corporate overview

ASX Listing (EER)	19 December 2007
Shares on issue	90,500,002
Current share price (as at 29 October 2008)	A\$0.23
Market capitalisation	A\$20.8M
Cash position (29 October 2008)	Approximately A\$2M
Debt	Nil
Unlisted options on issue ¹	1,100,000
Top 20 shareholding	>80.37%



¹ Unlisted Options expire on 31 August 2010, exercise price \$0.30



Board & management

Terence Byrt - Non-Executive Chairman

More than ten years experience in analysing and managing tenements, with several mineral finds to his credit, which had previously been relinquished by others. Founder and chairman of RMA Energy (ASX: RMT) and a Director of Ansett Resources & Industries Pty Ltd.

Mark Basso - Managing Director

Has a Bachelor of Engineering and was involved in the electrical design and construction phases of the Perth International Airport, LNG Storage Tanks on the Burrup and HV Substations Cape Lambert and Pannawonica. More than 15 years business management experience as managing director of private companies.

Mr Clive Triplett - Executive Director

Managing Director of RMA Energy (ASX: RMT) and has headed private companies in the areas of consulting, International trade, finance and infrastructure development. Extensive network of high-level contacts in both government and the private sector and has negotiated and secured international trade and mining agreements.

Malcolm Castle - Non-Executive Director

More than 40 years experience in exploration geology and property evaluation. Extensive experience in a number of commodities including gold, base metals, iron ore, mineral sands and coal. He has a number of related qualifications including B.Sc (Hons), GCert APP Fin (Sec Inst), MAusIMM

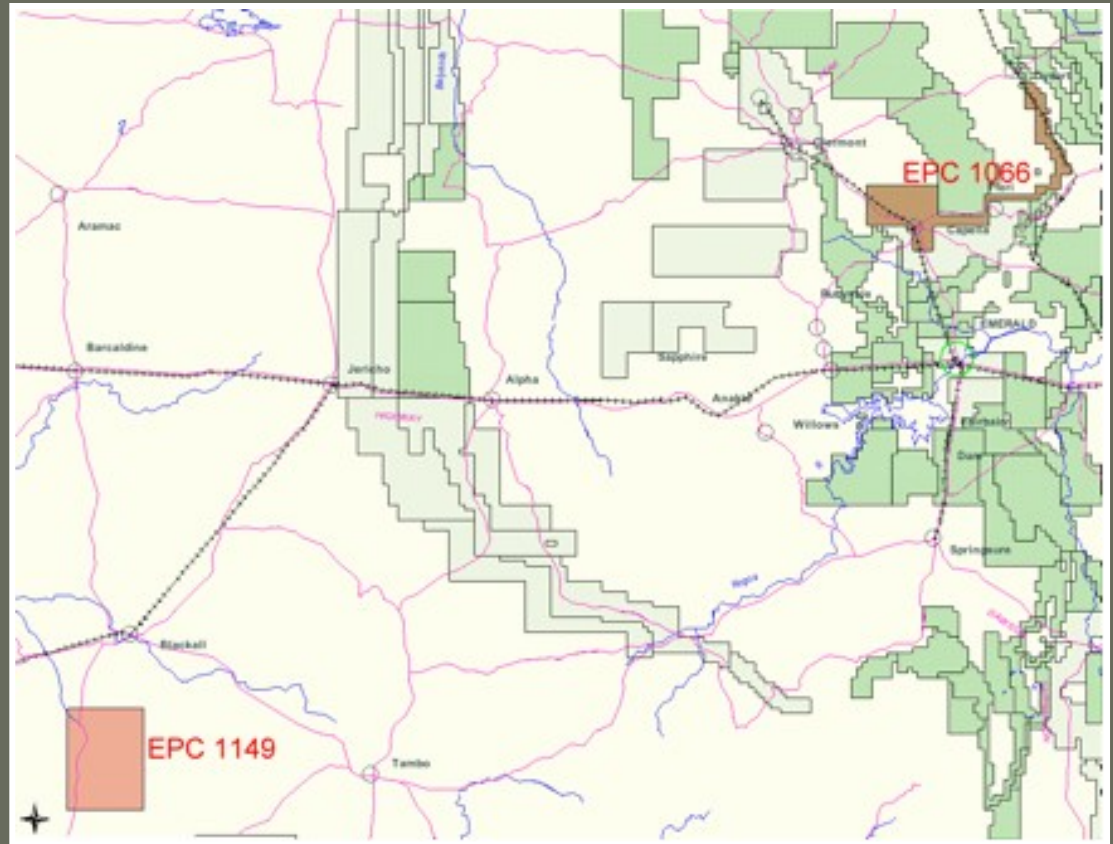
Ranko Matic - Non-Executive Director and Company Secretary

Chartered Accountant with more than 18 years experience in financial and executive management, accounting, audit, business and corporate advisory. Currently holds company secretarial roles with publicly listed companies Golden State Resources Ltd, White Canyon Uranium Ltd and Accent Resources NL.

Company focus

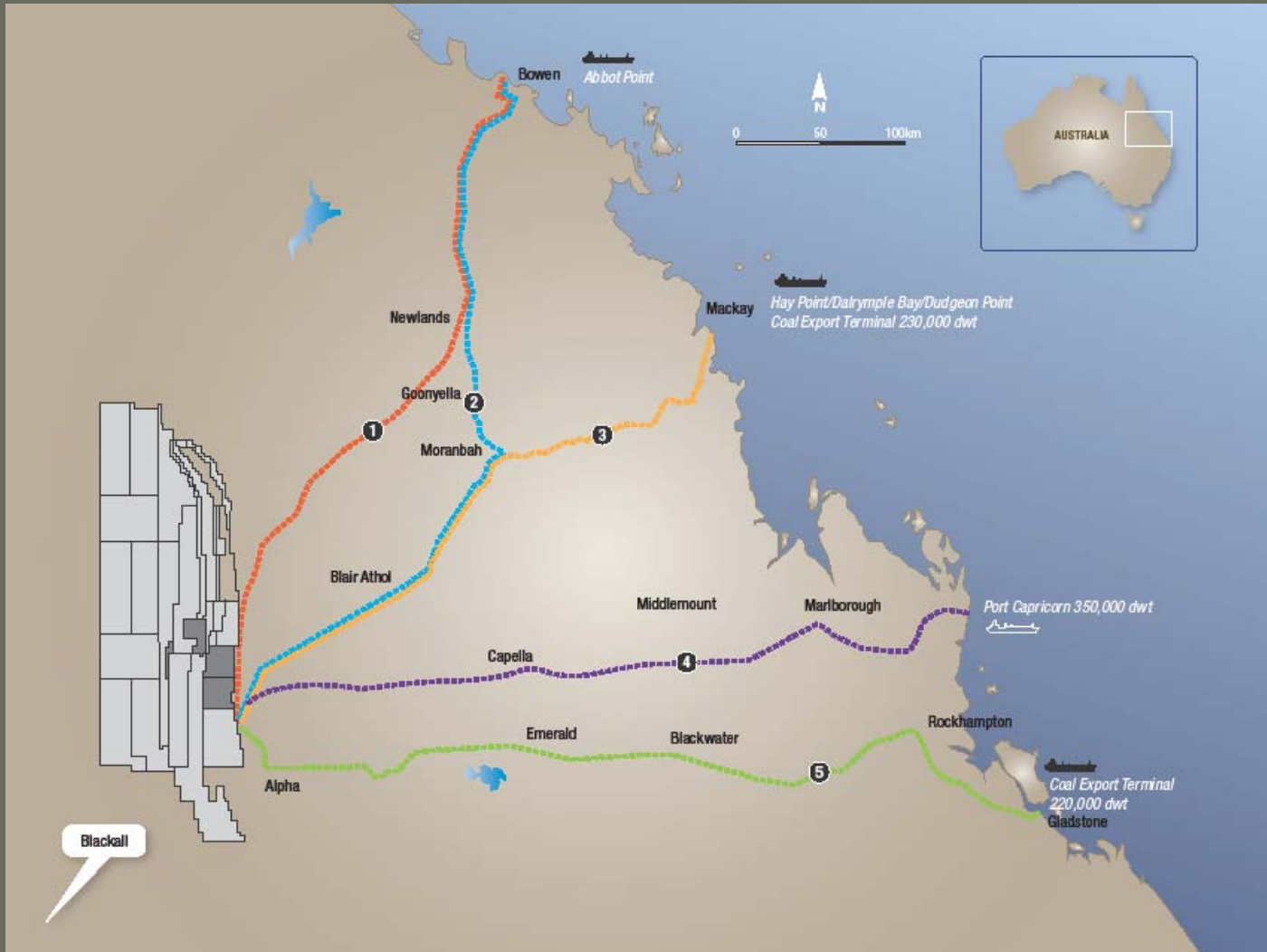
**Blackall Coal Project
(EPC 1149)
Adavale Basin, QLD**

**Norwich Park Coal
Project (EPC 1066)
Bowen Basin in Qld**



Map showing central Queensland tenements

A known coal area



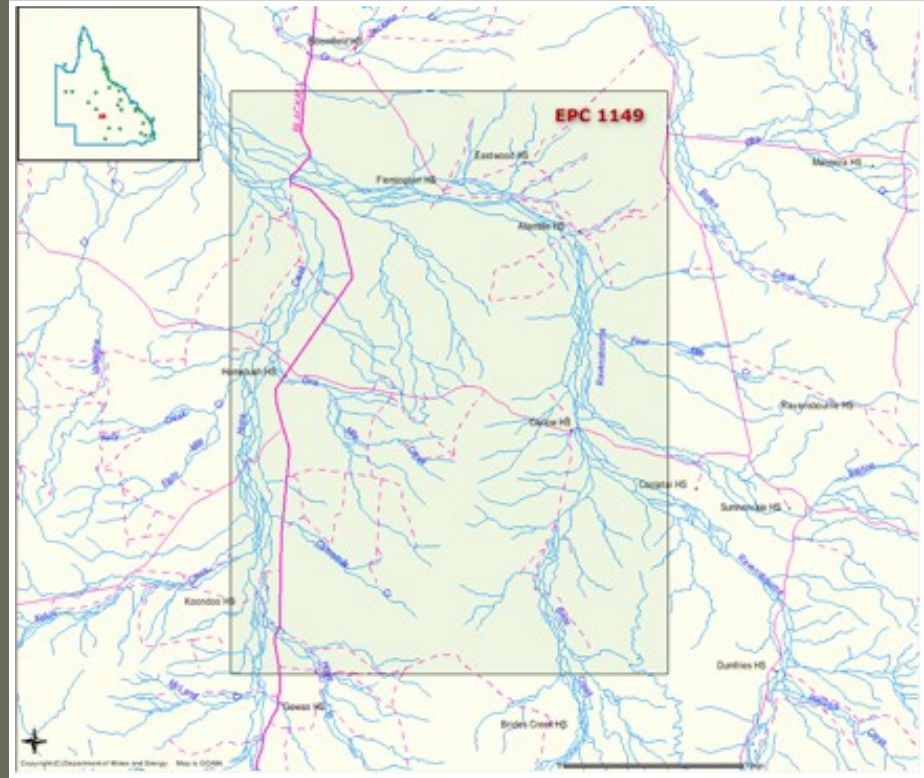
Our location within the region



Blackall – EPC 1149

What we have:

- 300 sub blocks, approximately 867 km²
- Exploration permit granted for five years commencing April 2008
- The tenement hosts 500-550 million tonne mineralisation target based on the stage 3 & 4 drilling results. Further drilling results still remain to be analysed.
- The tenement is located 65 km South of the Blackall township and approximately 160km Southwest of Alpha. The townsite has numerous people looking for work in the mining industry.



Blackall tenement

Blackall – EPC 1149

What have we done so far?

- Within two months of being granted formal approval for the area, commenced drilling
- Explored more than 300 million square metres
- Used up to five drill rigs to complete over 190 RAB holes to approximately 100m depth each
- Intersected coal seams up to 6m over a 22km strike
- Two rigs have completed coring at 2km centres. All samples have been sent to ALS for detailed analysis.
- Mineralisation target at project increased to more than 500mt
- Maiden JORC resource to be produced Q1 2009



Drilling on the Blackall Project

What have we achieved to date:

- Assays indicate an average cumulative coal seam thickness in excess of 4m
- Modeling shows blending of thermal coal on site will produce an average air dried CV of approximately 5000 k/cal
- Assays from coal in EPC 1149 indicate very low sulfur content meaning it will have greatly reduced sulfur dioxide emission levels
- The Blackall deposits are virtually free dig amenable to excavation without blasting
- Unweathered seams as close as 12.77 metres to the surface.

Norwich Park – EPC 1066

The Bowen Basin:

- Large, triangular-shaped area in central Queensland, 600km long and up to 250km wide
- Contains approx 70% of Queensland's coal stocks
- The most important Permian coal basin in Queensland
- Permian coal - the most commercially significant coal
- Desktop study to be completed early Q1 2009. Exploratory drilling to commence thereafter subject to desktop study results

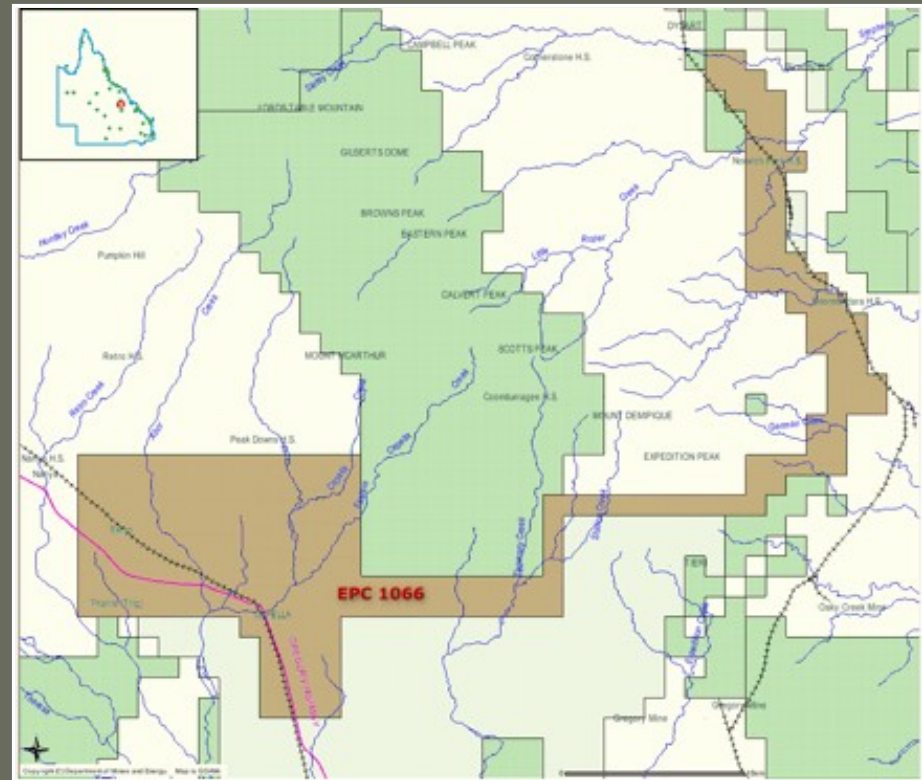


Dalrymple Bay Coal Terminal, QLD

Norwich Park – EPC 1066

Our asset at Norwich Park:

- 266 sub blocks or approximately 803 km²
- Lies immediately west of Norwich Park Mine and extends west to Capella
- Covers lower part of Bowen Basin sediments
- Has potential for Class I and Class II coal deposits
- Coal measures being mined adjacent to tenement
- Rail infrastructure at Dysart, extending through eastern part of tenement



Norwich Park tenement and infrastructure

Norwich Park – EPC 1066

What are our plans?

- Data review indicates exploitable coal seams may exist within tenement below coal measures currently being mined by other parties
- Conclude negotiation on access agreement
- Complete extensive desktop study of available historical data
- Carry out site evaluation of Project area
- Extensive interest shown by several parties subject to minimal exploration drilling to prove up the presence of coaking coal.

QLD Coal market

- The Queensland coal industry has entered another phase of major expansion that could take coal exports from 145.5 Mt/a in 2004–05 to about 215 Mt/a by 2010, mainly driven by increased demand for metallurgical coals from Queensland's traditional markets in Asia and Europe.
- Mine expansions and establishment of new mines, both open-cut and underground operations in the Bowen Basin, will account for this additional 70 Mt/a production capacity with the majority of coal continued to be sourced from open-cut mines.
- Rail transport, port capacities and other infrastructure are progressively being expanded to meet this increased demand and the Queensland Government has committed to spend more than \$2.2 billion on new infrastructure projects that will support the coal industry.



QLD Coal market... cont

- Further infrastructure developments worth an additional \$3.1 billion are also planned.
- The strong demand for coal has also stimulated increased coal exploration with virtually all known potentially economic coal-bearing lands now held under coal mining and exploration tenures.
- Queensland has the coal resource base to underpin further expansion and allow continuation of coal exports to the international market for the foreseeable future provided that coal prices and currency exchange rates remain relatively stable.





Why invest in East Energy?

- *We make things happen*
- We are able to achieve this with a strong, committed, efficient and effect management/ technical team to provide results quickly with commitment to develop coal projects
- Two highly prospective projects in known coal mineralisation areas
- Maiden JORC resource for flagship Blackall Project expected in Q1 2009



Thank you for your time

For more information or if you have any queries you can contact East Energy at:

Office Address

Level 7
16 St Georges Terrace
Perth WA 6000

Telephone

+61 8 9225 5833/ 0412 844 422

Facsimile

+61 8 9225 7311

Email

mbasso@eastenergy.com.au

Website

www.eastenergy.com.au